



The SEAL 62 Base provides the following features

Optimum performance

- 1575 mm working width to cope with a wide range of media performance
- Adjustable pressure and speed settings for maximum versatility
- 50 mm nip opening to cover a wide range of substrates
- Heat assisted top roller for superb lamination performance
- 50 mm nip opening suitable for working with a sled for road signs
- 5 m/min max speed for improved productivity
- Manual nip adjustment for precise operation
- Robust, free standing design

Ease of use

- Ergonomic control panel for ease of use
- Auto grip shafts for user friendly webbing
- Swing up feed table to facilitate easy set up
- Roll-to-roll option for volume production
- Bottom re-wind option to run products with release liner from the bottom supply shaft

Safety

- Foot switch for hands free operation
- Self checking safety eyes for increased operator safety
- CE certified

The SEAL 62 Base laminator represents SEAL's latest offering to the rapidly moving sign and display market. Ideal for mounting and laminating pressure sensitive solutions up to 1575 mm, this machine represents a flexible package at an affordable price, yet without compromising its functionality.

The SEAL 62 Base is a pressure sensitive machine with heat assist on the top roller to provide superb results with a wide range of materials. Whatever the experience of the operator, the SEAL 62 Base will prove to be a simple machine to use and will deliver genuine flexibility and high performance levels for the small to medium sized end user.

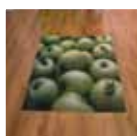
Having great capability delivered at an affordable price, the 62 Base is ideal for signmakers. It will provide the means for these users to finish their images and create more applications thereby generating greater profitability. This laminator is also suitable for small to medium display based businesses who want to provide a wider range of applications and have no need for an encapsulating machine.

The SEAL 62 Base is ideal for producing a wide variety of applications (pressure sensitive materials only)

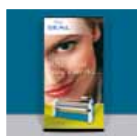
Rigid Indoor Displays



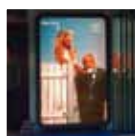
Floor Graphics



Roll-Up Displays



Backlit Displays



Pop-Up Displays



Rigid Outdoor Displays



SEAL 62 Base

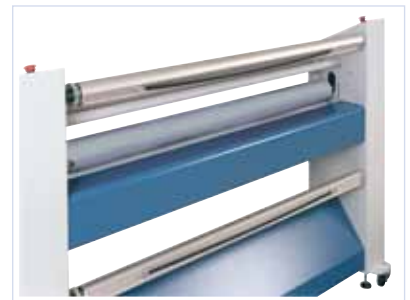
Technical Specifications

| | |
|-----------------------------|------------------------------------------------------------------------------------------|
| Maximum Working Width | 1575 mm |
| Maximum Speed | 5 m/min. |
| Nip pressure | 1N/mm |
| Maximum Substrate Thickness | 50 mm |
| Roller Heating | Heat assisted top roller |
| Maximum Roller Temperature | 40°C |
| Width | 2090 mm |
| Height | 1326 mm |
| Depth (excl. table) | 483 mm |
| Depth (incl. in-feed table) | 590 mm |
| Working Height | 900 mm |
| Net Weight | 240 kg |
| Width (Shipping Dimensions) | 2184 mm |
| Height | 1550 mm |
| Depth | 762 mm |
| Shipping Weight | 300 kg |
| Electrical Requirements | 1N/PE 230VAC +/- 10%, 50/60 Hz, 8,5A |
| Order Codes: | 64339 62 Base 64610 Bottom Re-wind Option 64611 Roll-to-Roll Option |

Ergonomic control panel for ease of use.



Auto grip shafts for user friendly webbing.



SEAL® is a registered trademark of SEAL Graphics

SEAL Graphics Europe

Heesweg 16A
8102 HJ Raalte
The Netherlands
Tel: + 31 572 346 000
Fax: + 31 572 346 001
Customer services:
Tel: + 49 5722 2070

SEAL Graphics UK

1 Watkins Close
Burnt Mills Industrial Estate
Basildon, Essex SS13 1TL
United Kingdom
Tel: + 44 1268 722 400
Fax: + 44 1268 725 864

SEAL for the Americas

7091 Troy Hill Drive
Elkridge
MD 21075
U.S.A.
Tel: + 1 410 379 5400
Fax: + 1 410 579 8960



Contact your local distributor: