

Easy on the Environment and People

With the EX Series, signmakers can conduct their printing operations without headaches, dizziness or concerns about the environment. Revolutionary ECO-SOL INK is formulated to be gentle for both users

and the environment. Odor is much less than with hard solvent inks and requires no special ventilation or environmental equipment.



Cost Effective

Keeping costs low is a major concern of signmakers. With the EX, you can print on a wide variety of commercially available media. Choose from uncoated vinyl and banner materials for lower production costs, or Roland's premium SOL MEDIA, including backlit and glossy paper, for dependable outdoor and indoor use. As always, Roland provides unparalleled support, including profiles for over 50 of the most popular uncoated media.

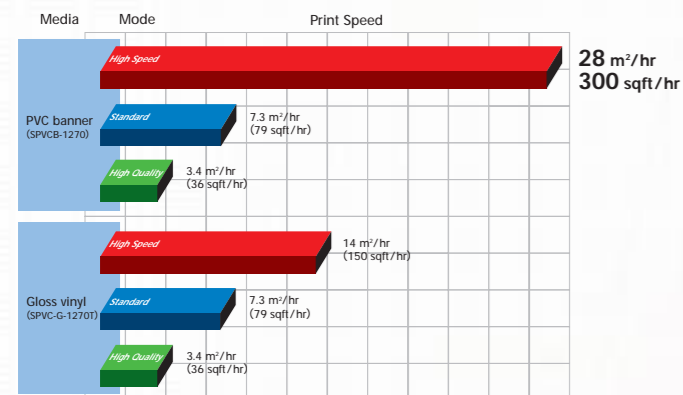
Roland's variable droplet technology and bundled Roland COLORIP software (RCR) help keep ink costs low by selecting the proper ink coverage and droplet size for optimum printing results. RCR also provides a number of convenient layout features, to help you achieve the most efficient media usage.

Outstanding Indoors and Out

Unlike hard solvent printers, the EX Series prints with virtually no odor, yet graphics can be installed both indoors or out. Thanks to Roland's ECO SOL INK, you can get up as close as possible to admire the details indoors while being confident of water, scratch, and UV resistance with up to three years durability outdoors*.

* Three years outdoor durability is based on accelerated weather tests conducted by Roland DG. Results may vary depending upon location and application.

Remarkable Production Velocity



Have you ever felt like you've been waiting all day for a print? You won't feel that way with the SOLJET PRO II EX series. The PRO II's remarkable production velocity—up to 28m²/hr (300 sqft/hr) at 450 x 360 dpi—is the result of over 100 individual technological enhancements. Six one-inch precision heads cover a larger print area while firing 360 nozzles per color. Multiple high-speed CPUs and a multitasking operating system reduce internal processing time. A built-in accelerated Ethernet print server doubles transmission speed to the main board. Included with the EX series, RCR provides simultaneous RIP&Print capabilities. It all adds up to peak production speed with no waiting.

Unsurpassed Print Quality

When it comes to quality printing, it's all about getting the right drops in just the right place, time and time again. It's not really art; it's precision engineering. With variable droplet Piezo print heads and a digital servo motor to control the media feed, the EX precisely controls droplet placement in both the print head travel and paper feed directions to



provide true 1440x1440 dpi resolution. The six precision print heads cover a large one-inch area and are designed in a unique in-line configuration for superior dot control.

Roland variable droplet technology utilizes microscopic ink droplets of three different sizes depending on the type of output. This technology delivers truly breathtaking output using six colors: CMYK plus light cyan and light magenta. For those who demand the very finest print quality, Roland provides a full lineup of SOL MEDIA.

High Performance, Professional Roland COLORIP Included

Designed especially for the PRO II series, Roland COLORIP (RCR) software provides precision color management and high-fidelity printing. Simultaneous RIP&Print capability, enhanced color management and several unique layout options are just a few of its powerful features.

Quick Configure™ delivers a major product advance in effortless printing. Just select the media type and the ideal mode for your application whether High Quality, Standard or High Speed. RCR automatically determines the optimum dot size, dot combinations, positioning, tone curve, and the proper amount of ink.

RCR is PostScript® compatible, allowing you to print easily from Adobe® Photoshop®, Adobe Illustrator®, Macromedia FreeHand®, QuarkXPress™ and other popular graphics software. You can also print directly from TIFF, PDF 1.4, JPEG, DCS 2.0, EPS and PS files.

ICC profiles customized for the EX Series printers ensure excellent printing results on a wide variety of coated and uncoated media. RCR also supports custom ICC input and output profiles generated from any industry standard profiling software. Separate color rendering intents (CRDs) can be applied to different elements of a PostScript document.

Powerful new scaling, rotation, and automatic layout features are an integral part of RCR. You can tile a job automatically or manually, or crop an image right in the RIP to fit a specific size requirement. RCR lets you nest multiple jobs to economize on media usage. Automatic step and repeat allows you to efficiently layout multiple page documents. With the label-printing feature, you can automatically attach notes including RIP settings to your work, creating more consistent results over multiple print runs.



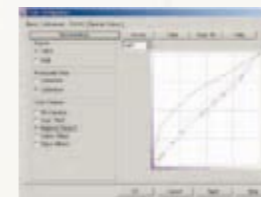
Manual Layout



Automatic Step and Repeat



Tiling

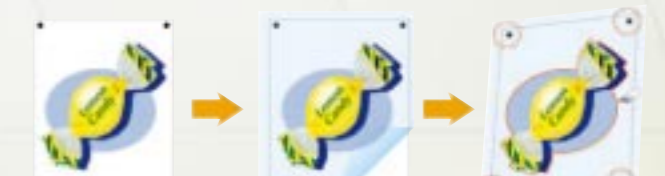


Density Curve Adjustment

Precision Contour Cutting with Quadralign™



The SC-540 EX makes quick work of precision contour cutting of decals, signs, labels, point of purchase displays and packaging prototypes. Once an image has been printed, it can be automatically contour cut without having to reload or reposition the media. Thanks to Roland's industry-leading cutting technology, the SC-540 EX cuts elegant arcs and curves with incredible accuracy at speeds up to 600 mm/sec (24"/sec). Printing and cutting operations can be handled simultaneously from a variety of software applications, including Adobe® Illustrator®, Adobe PageMaker®, CorelDRAW® and QuarkXPress™.



Automatically generates crop marks at the four corners.

Allows you to remove the print, laminate and then reload the media.

Recalculates the cutting path by adjusting to the crop mark position changes.

Legendary Roland Reliability

It's not surprising that Roland PRO II printers swept the wide format inkjet printing competition at the 2003 PMA Show in Las Vegas. Roland continues to set the standard for engineering excellence with the SOLJET PRO II EX. User-friendly features include:

- A 3-level lever to adjust head height for handling a wide variety of media from artist canvas or banner stock to fine films.
- ECO SOL INK is conveniently packaged in easy-to-handle 220 ml cartridges. When a cartridge is running low, the printer warns you and pauses the job so there's no partial print waste.

- An auto sheet cutter separates output from the roll after printing.
- A factory-integrated heating system opens the pores of the substrate, allowing the ECO-SOL INK to aggressively bond with the media. The result is improved UV and water resistance on a wide range of media, including both coated and uncoated stock.
- The EX's grit roller shaft features a digital servomotor and encoder to provide precision control of the media feed rate, resulting in artifact-free printing.



Easy-to-use ink cartridges



Built-in heating system

Ecology & Economy Now Roland gives you both!

